



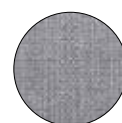
LEO SOFA

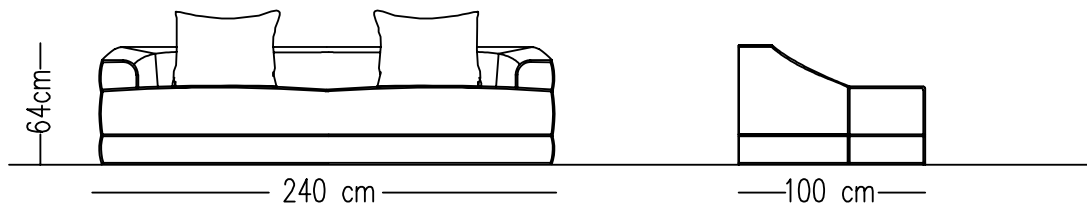
Norde

TECHNICALS PECIFICATIONS

Designed by
Norde Design Studio

INTERIOR STRUCTURE	BEECH HARDWOOD FRAME , ZIGZAG BOW AND ELASTIC COLUMN
SEAT CUSHION	HR FOAM
BACK	HR FOAM
UPHOLSTERY	TIGHT
MAINTENANCE	ALL DECORATIVE CUSHIONS ARE GOOSE DOWN AND SILICON MIX, QUANTITY AND DIMENSIONS ARE AS PER TECHNICAL DRAWINGS..STANDART WITH 3 CUSHIONS 70*70 We recommend shaking and fluffing-up the cushions regularly to maintain the shape. This should be done after removing the cushions from the structure for improved air circulation. For maintenance of fabric and leather, please contact your retailer.



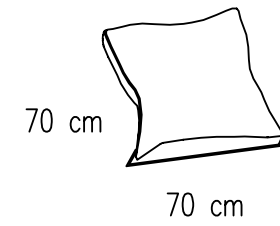
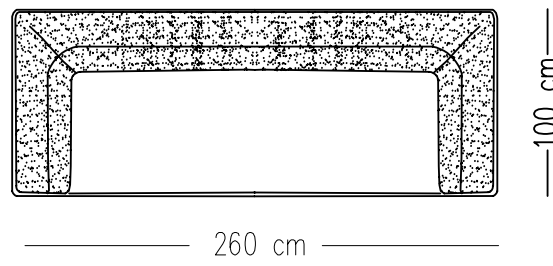
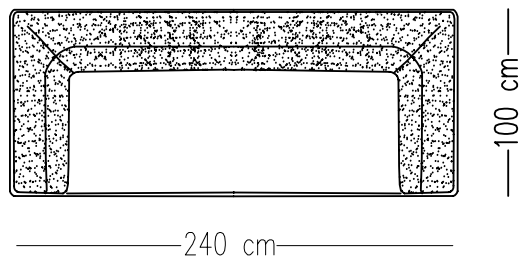


STANDARDS

SOFA - 240 CM

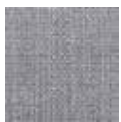
SOFA - 260 CM

CUSHION



Catalog product-fabric

N-A24/Linen



9

Catalog product-Legs

Hidden Legs

Fabric Matrix



Material Catalogue



Alternative fabric
Linen